

## EQUIPMENT TESTERS

# C.A 6150

# C.A 6160

- IEC 60204-1
- IEC 60335-1
- IEC 60439-1
- IEC 60598-1
- IEC 60745
- IEC 60755
- IEC 60950
- IEC 61010-1
- IEC 61029
- IEC 61558-1
- EN 60065
- VDE 701 T1
- VDE 702 T1



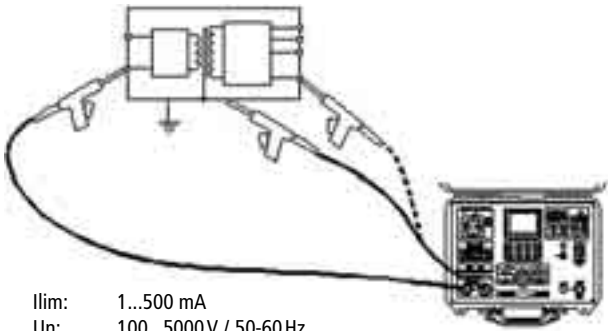
- **C.A 6150**  
dielectrical testing and insulation resistance measurement

- **C.A 6160**  
a **single instrument** for **all testing**: dielectrical testing, voltage drop and continuity testing, insulation resistance measurement, leakage current measurement, discharge time measurement and functional testing.

### Common functions:

- **AUTOTEST** function for automatic flow of a sequence of measurements.
- **large storage capacity**: 1,600 measurements can be saved.
- **software** for downloading stored data, creating test reports and programming measurement sequences.

**DIELECTRICAL TESTING**

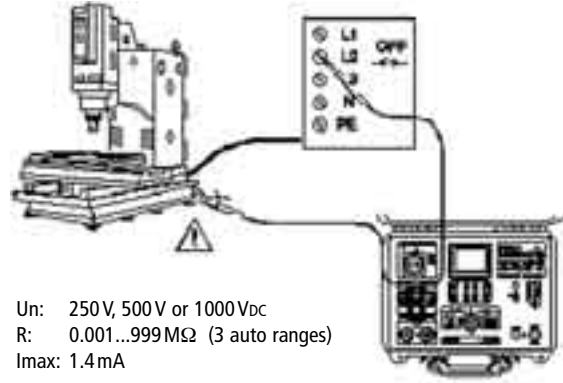


Ilim: 1...500 mA  
Un: 100...5000V / 50-60Hz  
Ptransfo: 500VA

**2 measurement modes:**

- **standard:** setting of Un & Itest/ "short-circuit" mode selection
- **programmed:** (t1, t2, t3, U1, U2) voltage/predefined time diagram

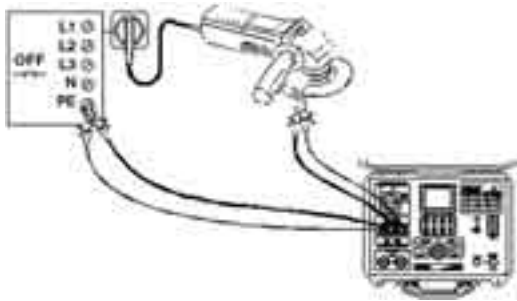
**INSULATION**



Un: 250V, 500V or 1000Vdc  
R: 0.001...999MΩ (3 auto ranges)  
Imax: 1.4mA

- measurement time programmable up to 10 minutes
- automatic discharge after testing

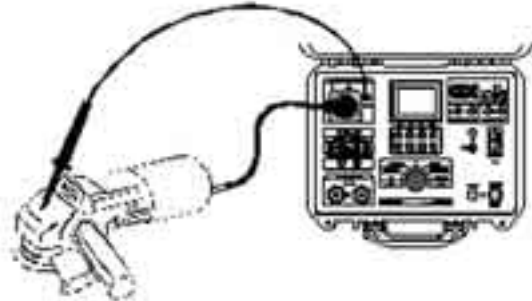
**VOLTAGE DROP & CONTINUITY**



**continuity:**  
R: 0.001...100.0Ω  
Itest > 0.1 / 0.2 / 10 / 25 A  
Utest < 12V / 50Hz

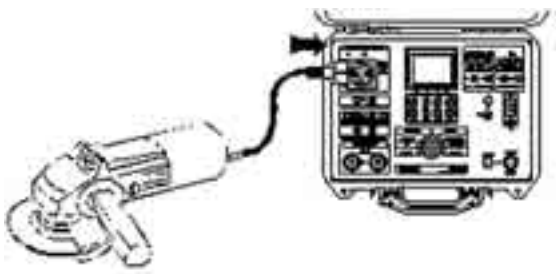
**voltage drop:**  
ΔU: 0.00...100V  
Itest > 10 A (R: 0...500 mΩ)  
Utest < 12V / 50Hz

**LEAKAGE CURRENT MEASUREMENT**



- leakage current: 0.00 to 20.0 mA
- residual leakage current: 0.00 to 20.0 mA
- contact current: 0.00 to 2.00 mA

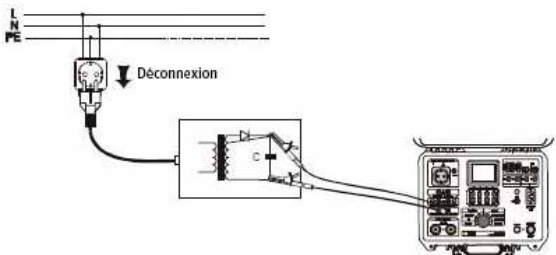
**FUNCTIONAL TEST**



**Available measurement:**

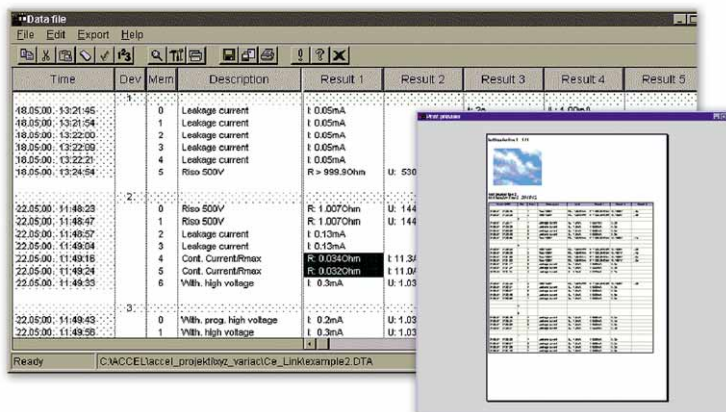
- active and apparent power
- power factor
- voltage, current and frequency

**DISCHARGE TIME**



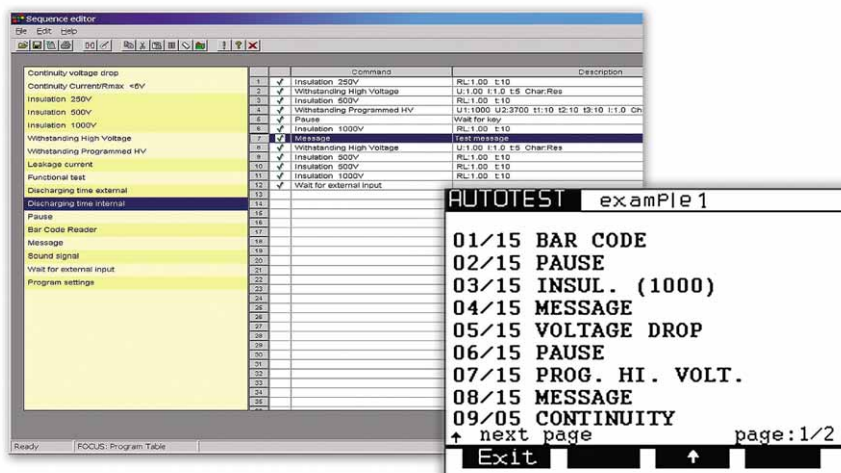
- **external discharge time:** at mains socket level
- **internal discharge time:** at tested equipment component level





- **Download** (manually or automatically) the data stored in the tester.

- **Create** printable measurement reports.



- **Programme** AUTOTEST sequences, procedures that may contain up to 30 commands (measurements, messages...).
- A sequence may be programmed by the user, per type of tested equipment or tested standard.

- These sequences will then be downloaded in the tester.



## General features:

- Mains voltage: 230V/50-60Hz
- Maximum power: 500VA
- Permanently backlit LCD matrice screen
- RS232 Interface
- Remote control signals: ON/OFF, RECORD
- Connector for connection with EAN13 type bar code reader
- Comply with EN 61010-1 and EN 61326 standards
- Overvoltage category: Cat .III 300V, Cat. II 600V
- Degree of pollution: 2 – Protection class: I
- Protection factor (closed): IP 50
- Dimensions: 410 x 175 x 370 mm
- Weight: 13.5 kg (C.A 6160) or 12.5 kg (C.A 6150)

## OPTIONAL ACCESSORIES

PC software .....	P01.1019.96
Remote control pedal .....	P01.1019.16
Signal lamps (green/red) .....	P01.1019.17

## TO ORDER

### C.A 6150

Dielectrometer/megohmmeter (EURO)	P01.1457.01
Dielectrometer/megohmmeter (GB)	P01.1457.01A

Delivered with carrying bag containing:

- 1 mains cable (EURO or GB)
- 2 pistol-grip dielectrical testers with 2 metre-long wire
- 2 insulation test wires, 3 metres long (1 red, 1 black)
- 2 alligator clamps (1 red, 1 black)
- 2 test probes (1 red, 1 black)
- 5 instruction manuals (5 languages)

### C.A 6160

Equipment tester (EURO)	P01.1458.01
Equipment tester (GB)	P01.1458.01A

Delivered with carrying bag containing:

- 1 mains cable (EURO or GB)
- 2 pistol-grip dielectrical testers with 2 metre-long wire
- 2 insulation test wires, 3 metres long (1 red, 1 black)
- 4 alligator clamps (2 red, 2 black)
- 2 test probes (1 red, 1 black)
- 4 continuity test cables, 2.5 metres long (2 red, 2 black)
- 1 discharge time cable (EURO or GB)
- 5 instruction manuals (5 languages)



Remote control pedal

Signal lamps