

# HOBO® Temp Data Logger (UX100-001) Manual



The HOBO Temp data logger records temperature in indoor environments with its integrated sensor. Using HOBOWare®, you can easily configure the logger alarm to trip for specific high or low temperatures. Or, you can set up burst logging in which the logger records data at a different interval during certain conditions. The logger can also calculate minimum, maximum, average, and standard deviation statistics. This compact data logger has a built-in LCD screen to monitor temperature, logging status, battery use, and memory consumption in between readouts.

## Specifications

### Temperature Sensor

|                      |   |
|----------------------|---|
| <b>Range</b>         | -20° to 70°C (-4° to 158°F)                                     |
| <b>Accuracy</b>      | ±0.21°C from 0° to 50°C (±0.38°F from 32° to 122°F), see Plot A |
| <b>Resolution</b>    | 0.024°C at 25°C (0.04°F at 77°F); see Plot A                    |
| <b>Response Time</b> | 8 minutes in air moving 1 m/s (2.2 mph)                         |
| <b>Drift</b>         | <0.1°C (0.18°F) per year  |

## HOBO Temp Data Logger

UX100-001

### Included Items:

- Command™ strip
- Double-sided tape
- Hook & loop strap

### Required Items:

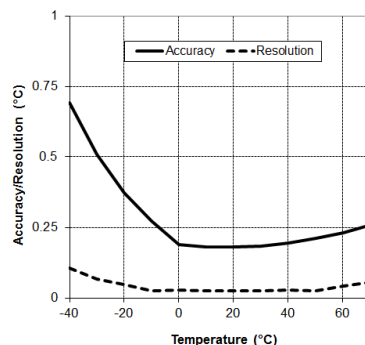
- HOBOWare 3.4 or later
- USB cable (included with software)

### Logger

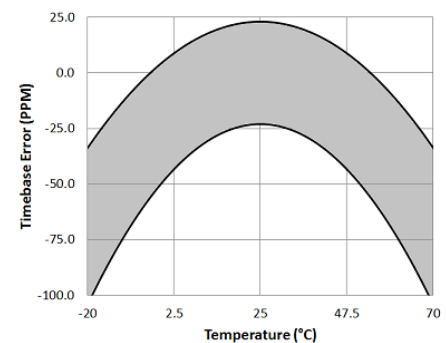
|                                  |   |
|----------------------------------|---|
| <b>Logger Operating Range</b>    | Logging: -20° to 70°C (-4° to 158°F); 0 to 95% RH (non-condensing)<br>Launch/Readout: 0° to 50°C (32° to 122°F) per USB specification |
| <b>Logging Rate</b>              | 1 second to 18 hours, 12 minutes, 15 seconds  |
| <b>Logging Modes</b>             | Normal, burst, or statistics  |
| <b>Memory Modes</b>              | Wrap when full or stop when full  |
| <b>Start Modes</b>               | Immediate, push button, date & time, or next interval   |
| <b>Stop Modes</b>                | When memory full, push button, or date & time   |
| <b>Restart Mode</b>              | Push button   |
| <b>Time Accuracy</b>             | ±1 minute per month at 25°C (77°F), see Plot B  |
| <b>Battery Life</b>              | 1 year, typical with logging rate of 1 minute and sampling interval of 15 seconds or greater  |
| <b>Battery Type</b>              | One 3V CR2032 lithium battery   |
| <b>Memory</b>                    | 128 KB (84,650 measurements, maximum)   |
| <b>Download Type</b>             | USB 2.0 interface   |
| <b>Full Memory Download Time</b> | 20 seconds  |
| <b>LCD</b>                       | LCD is visible from 0° to 50°C (32° to 122°F); the LCD may react slowly or go blank in temperatures outside this range                |
| <b>Size</b>                      | 3.66 x 5.94 x 1.52 cm (1.44 x 2.34 x 0.6 in.)   |
| <b>Weight</b>                    | 23 g (0.81 oz)  |
| <b>Environmental Rating</b>      | IP50  |



The CE Marking identifies this product as complying with all relevant directives in the European Union (EU).

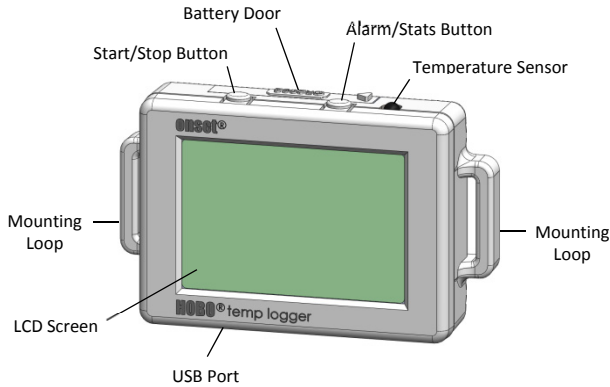


Plot A: Temperature Accuracy and Resolution



Plot B: Time Accuracy

## Logger Components and Operation



**Start/Stop Button:** Press this button for 3 seconds to start or stop logging data, or to resume logging. This requires configuring the logger in HOBOWare with a push button start or stop, and with “Resume logging on next button push” selected (see *Setting up the Logger*). You can also press this button for 1 second to record an internal event (see *Recording Internal Logger Events*) or to turn the LCD screen on if the option to turn off the LCD has been enabled (see *Setting up the Logger*).

**Battery Door:** Open the battery door on the top of the logger to access the logger battery (see *Battery Information*).

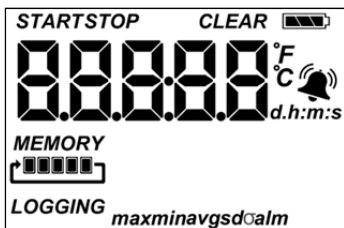
**Alarm/Stats Button:** Use this button to clear a tripped alarm (see *Setting up Alarms*) or to switch between statistics, alarm readings, and the current temperature reading.

**Temperature Sensor:** This sensor is located on the top of the logger case to the right of the Alarm/Stats button.

**Mounting Loops:** Use the two mounting loops to mount the logger with the hook-and-loop strap (see *Mounting the Logger*).

**USB Port:** Use this port (not visible in the diagram) to connect the logger to the computer or the HOBO U-Shuttle via USB cable (see *Setting up the Logger* and *Reading Out the Logger*).

**LCD Screen:** This logger is equipped with an LCD screen that displays details about the current status. This example shows all symbols illuminated on the LCD screen followed by definitions of each symbol in the table below.



| LCD Symbol   | Description  |
|--------------|--|
| <b>START</b> | The logger is waiting to be launched. Press and hold the Start/Stop button for 3 seconds to launch the logger.   |
| <b>STOP</b>  | The logger has been launched with push button stop enabled; press and hold the Start/Stop button for 3 seconds to stop the logger. <b>Note:</b> If you also launched the logger with a push button start, this symbol will not appear on the display for 30 seconds. |
|              | The battery indicator shows the approximate battery power remaining.   |

| LCD Symbol                        | Description   |
|-----------------------------------|---|
|                                   | The logger has been configured to stop logging when memory fills. The memory bar indicates the approximate space remaining in the logger to record data. When first launched, all five segments in the bar will be empty. In this example, the logger memory is almost full (only one segment in the memory bar is empty).  |
|                                   | The logger has been configured to never stop logging (wrapping). The logger will continue recording data indefinitely, with newest data overwriting the oldest data. When first launched, all five segments in the memory bar will be empty. In this example, the memory is full (all five segments are filled in) and new data is now overwriting the oldest data. This will continue until the logger is stopped or the battery runs out.   |
| <b>LOGGING</b>                    | The logger is currently logging.  |
|                                   | A sensor reading is above or below the high or low alarm that you configured. Press and release the Alarm/Stats button until the “alm” symbol (described below) is displayed on the screen. This symbol at left will clear depending on how alarms were configured in HOBOWare. If the alarm was configured to clear when the logger is relaunched, this symbol will remain on the LCD. Otherwise, it will clear when the sensor reading is back within the alarm limits or by pressing the Alarm/Stats button for 3 seconds. |
| <b>CLEAR</b>                      | An alarm is ready to be cleared. This will only appear if “Cleared with button press” was selected in the HOBOWare alarm settings. Press the Alarm/Stats button for 3 seconds to clear the alarm.   |
| <b>max<br/>min<br/>avg<br/>sd</b> | These symbols show the maximum, minimum, average, and standard deviation values most recently calculated for the logger (if the logging mode has been set to Statistics in HOBOWare). Press the Alarm/Stats button for 1 second to cycle through each of the available statistics and then back to the current temperature (or to the alarm value if applicable).   |
| <b>alm</b>                        | This is the sensor reading that tripped the alarm. Press the Alarm/Stats button to view this reading. Press the Alarm/Stats button again to cycle through any statistics (defined above) and ultimately back to the current temperature.  |
| <b>88.2°F</b>                     | This is an example of a temperature reading. Temperature units are determined by the settings in HOBOWare. To switch between Celsius and Fahrenheit, change the Display Preferences in HOBOWare before launching the logger.  |
| <b>05:38 m:s</b>                  | The logger has been configured to start logging on a particular date/time. The display will count down in days, hours, minutes, and seconds until logging begins. In this example, 5 minutes and 38 seconds remain until logging will begin.  |
| <b>LoAd</b>                       | The launch settings are being loaded onto the logger from HOBOWare. Do not disconnect the USB cable during this process.  |
| <b>Err</b>                        | An error occurred while loading the launch configurations onto the logger from HOBOWare. Make sure the USB cable is connected to both the logger and the computer and try launching again.  |
| <b>stop</b>                       | The logger has been stopped with HOBOWare or because the memory is full.  |

**Notes:**

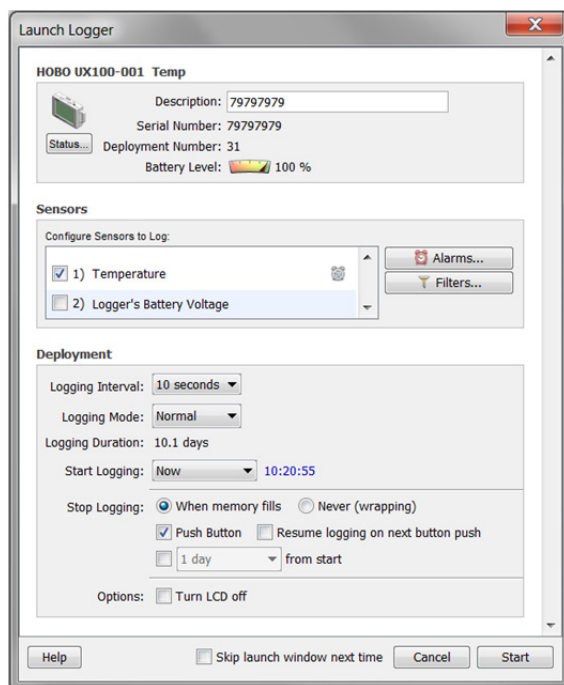
- You can disable the LCD screen when logging. Select “Turn LCD off” when setting up the logger as described in the next section. When this option is enabled, you can still temporarily view the LCD screen by pushing the Start/Stop button for 1 second. The LCD will then remain on for 10 minutes.
- The LCD screen refreshes every 15 seconds regardless of the logging interval selected in HOBOWare. If you choose a logging interval less than 15 seconds, the data will be recorded at the faster interval, but the temperature readings will only be updated on the screen every 15 seconds.
- When the logger has stopped logging, the LCD screen will remain on until the logger is offloaded to a computer or HOBO U-Shuttle (unless launched with the “Turn LCD off” option). Once the logger has been offloaded and disconnected from the computer, the LCD will turn off automatically after 2 hours. The LCD will turn back on the next time the logger is connected to the computer.

**Setting up the Logger**

Use HOBOWare to set up the logger, including setting alarms, selecting the options to start and stop logging, and choosing a logging mode.

**1. Connect the logger and open the Launch Logger window.**

To connect the logger to a computer, use the USB cable provided. Click the Launch icon on the HOBOWare toolbar or select Launch from the Device menu. The temperature sensor is automatically selected for logging.



**Important:** USB 2.0 specifications do not guarantee operation outside the range of 0°C (32°F) to 50°C (122°F).

**2. Set up alarms (optional).** Click the Alarms button if you want to configure an alarm to trip when the temperature is

above or below a value you specify. See *Setting up Alarms* for details.

**3. Configure filters (optional).** Click the Filters button to create additional filtered data series. Any filtered series will be available automatically upon reading out the logger.**4. Select the Logging Interval.** Select a logging interval from 1 second to a maximum of 18 hours, 12 minutes, and 15 seconds.**5. Select the Logging Mode:**

- Normal.** In Normal mode, data will always be recorded at the regular logging interval set in the previous step. This is the default setting.
- Burst.** In Burst mode, logging will occur at a different interval when a specified condition is met. See *Burst Logging* for more information.
- Statistics.** In Statistics mode, maximum, minimum, average, and standard deviation statistics are calculated for the temperature during logging, sampling at an interval you specify. See *Statistics* for more information.

**6. Choose when to start logging:**

- Now.** Logging begins immediately.
- At Interval.** Logging will begin at the next even interval as determined by the selected logging interval.
- On Date/Time.** Logging will begin at a date and time you specify.
- Push Button.** Logging will begin once you press the Start/Stop logging button for 3 seconds.

**7. Choose when to stop logging:**

- When Memory Fills.** Logging will end once the logger memory is full.
- Never (Wrapping).** The logger will continue recording data indefinitely, with newest data overwriting the oldest. This option is not available if Burst is selected for the Logging Mode.
- Push Button.** Logging will end once you press the Start/Stop logging button for 3 seconds. If you select Push Button, you also have the option to select “Resume logging on next button push.” Select this if you want to be able to start and stop logging at any time during the deployment by pushing the Start/Stop button on the logger. Note that if you also choose Push Button to start logging, then you will not be able to stop logging until 30 seconds after logging begins.
- Specific Stop Time.** Logging will end at a date and time you specify. Note that if you also configure the logger for a Push Button stop and to “Resume logging on next button push,” then the logger will stop logging at the date you select regardless of how many times you stop and restart the logger with the Start/Stop button.

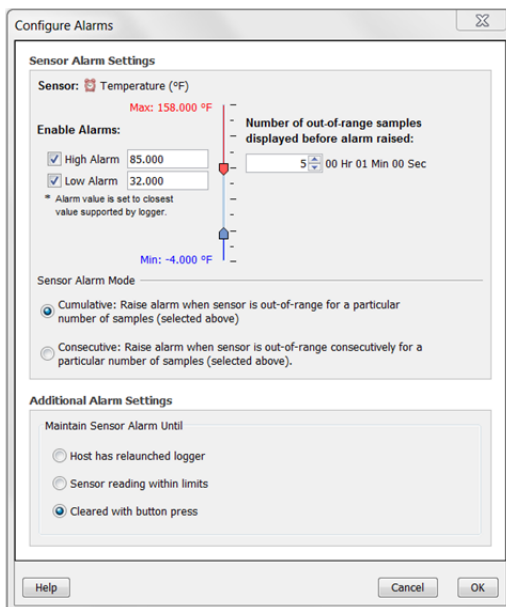
**8. Choose whether to keep the LCD on or off.** By default, the LCD will always remain on while logging. If you select the “Turn LCD off” checkbox, the LCD will not show the current readings, status, or other information while the logger is logging. You will, however, be able to temporarily turn the LCD screen on by pressing the Start/Stop button for 1 second if you select this option.

9. Click the **Start** button to launch the logger. Disconnect the logger from the computer and deploy it using the mounting materials (see *Mounting the Logger*). After logging begins, you can read out the logger at any time (see *Reading Out the Logger* for details).

## Setting up Alarms

You can set an alarm to trip on the logger when a sensor reading rises above or falls below a specified value. To set an alarm:

1. Click the Alarms button from the Launch Logger window. If the Alarms button is disabled, make sure the Logging Mode is not set to Burst. (Alarms can only be configured if the logger is in Normal or Statistics mode.)
2. Select the High Alarm checkbox if you want an alarm to trip when the temperature rises above the high alarm value. Type the reading next to the High Alarm checkbox or drag the red upper slider in the Configure Alarms window.



3. Select the Low Alarm checkbox if you want an alarm to trip when the temperature falls below the low alarm value. Type the reading next to the Low Alarm checkbox or drag the blue lower slider.
4. Set the "Number of out-of-range samples displayed before alarm is raised," which is the number of sensor readings needed to trigger each alarm. The time next to the "Number of out-of-range..." field indicates the amount of time it will take for the alarm to trip based on the number you entered in that field and the 15-second LCD refresh rate.
5. Select either Cumulative or Consecutive for the Sensor Alarm Mode. If you select cumulative, the alarm will trip after a specific number of samples (as set in the previous step) are outside the limits (the high or low samples do not need to be consecutive). If you select Consecutive, the alarm will trip after a specific number of samples (as set in the previous step) outside the limits are displayed in a row.
6. Choose how long the logger should maintain the sensor alarm once it has tripped. Select "Host has relaunched logger" if you want the alarm to remain visible on the LCD until the next time you relaunched the logger. Select "Sensor

reading within limits" if you want the alarm to clear once the sensor reading returns to the normal range between the high and low alarm limits. Select "Cleared with button press" if you want the alarm to remain on until you press the Alarm/Stats button on the logger.

7. Click OK to save alarm settings.

### Notes:

- Once the logger is launched, alarms will trip as determined by these settings. Logger alarms will display on the LCD screen. Note that the alarm limits are only checked when the logger's LCD screen refreshes every 15 seconds.
- The actual values for the high and low alarm limits are set to the closest value supported by the logger. For example, the closest value to 85°F that the UX100 series logger can record is 84.990°F and the closest value to 32°F is 32.043°F. In addition, alarms can trip or clear when the sensor reading is within the logger specifications of 0.02°C resolution. This means the value that triggers the alarm may differ slightly than the value entered. For example, if the High Alarm is set to 75.999°F, the alarm can trip when the sensor reading is 75.994°F (which is within the 0.02°C resolution).
- When you read out the logger, high and low alarm levels will be displayed on the plot along with "Chan 1 Alarm Tripped" and "Chan 1 Alarm Cleared" events showing when the temperature alarm tripped and cleared. The "Chan 1 Alarm Cleared" event contains the value that was furthest out of range for the sensor before the alarm cleared (see the Points table for the actual value).

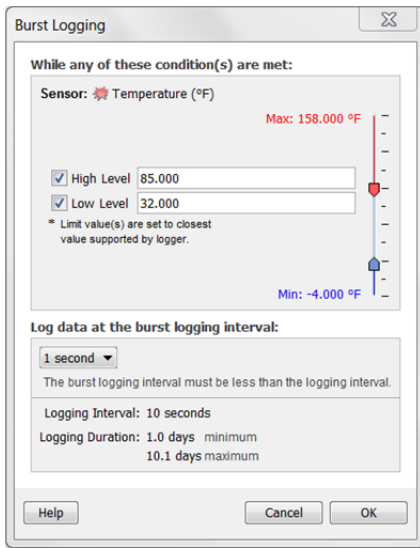
## Burst Logging

Burst logging is a logging mode that allows you to set up more frequent logging when a specified condition is met. For example, let's say the logger is recording data at a 5-minute logging interval and burst logging is configured to log every 10 seconds when the temperature goes above 85°F (the high level) or falls below 32°F (the low level). This means the logger will record data every 5 minutes as long as the temperature remains between 85°F and 32°F. Once the temperature reaches 90°F, for example, the logger will switch to the faster logging rate and record data every 10 seconds until the temperature falls back below the high level (or 85°F in this case). At that time, logging then resumes every 5 minutes at the normal logging interval. Similarly, if the temperature falls to 30°F, for example, then the logger would switch to burst logging mode again and record data every 10 seconds. Once the temperature rises back to 32°F, the logger will then return to normal mode, logging every 5 minutes.

To set up burst logging:

1. Select Burst for Logging Mode in the Launch Logger window. If Burst has already been configured for this logger, click the Edit button in the Launch Logger window. Note that you cannot set up alarms with burst logging. You also cannot select the Stop Logging option "Never (wrapping)" if burst logging is configured.
2. In the Burst Logging window, select the High Level checkbox if you want to set up a condition in which burst logging will occur when the sensor reading rises above the high level value. Type in the value or drag the red upper slider.





3. Select the Low Level checkbox if you want to set up a condition in which burst logging will occur when the sensor reading falls below the low limit value. Type in the value or drag the blue lower slider.
4. Set the burst logging interval, which must be less than the logging interval. Select either a preset burst logging interval or select Custom and enter your own interval. Keep in mind that the more frequent the burst logging rate, the greater the impact on battery life and the shorter the logging duration.
5. Click OK when done. This will return you to the Launch Logger window. Click the Edit button next to Logging Mode in the Launch Logger window to make additional changes.

**Notes:**

- Once the logger is launched, the high and low burst logging levels are only checked when the logger's LCD screen refreshes once every 15 seconds. Therefore, if you set the logging interval to less than 15 seconds and the sensor reading falls outside the levels, the burst logging will not begin until the next 15-second refresh cycle.
- The actual values for the burst logging levels are set to the closest value supported by the logger. For example, the closest value to 85°F that the logger can record is 84.990°F and the closest value to 32°F is 32.043°F.
- Burst logging mode can begin or end when the sensor reading is within the logger specifications of 0.02°C resolution. This means the value that triggers burst logging may differ slightly than the value entered. For example, if the High Level for a temperature alarm is set to 75.999°F, burst logging can start when the sensor reading is 75.994°F (which is within the 0.02°C resolution).
- Once the high or low condition clears, the logging interval time will be calculated using the last recorded data point in burst logging mode, not the last data point recorded in "normal mode." For example, let's assume the logger has a 10-minute logging interval and logged a data point at 9:05. Then, the high level was surpassed and burst logging began at 9:06. Burst logging then continued until 9:12 when the sensor reading fell back below the high level. Now back in normal mode, the next

logging interval will be 10 minutes from the last burst logging point, or 9:22 in this case. If burst logging had not occurred, the next data point would have been at 9:15.

- A New Interval event will appear on the plot (if you select events for plotting in the Plot Setup window) each time the logger enters or exits burst logging mode.

**Statistics**

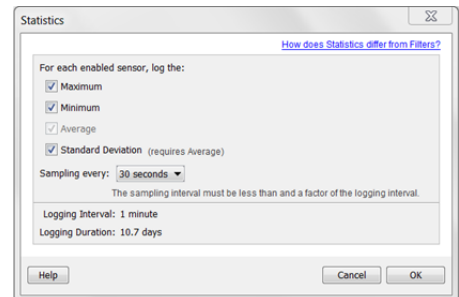
Statistics is a logging mode in which the logger calculates maximum, minimum, average, and standard deviation statistics during logging, recording the results at each logging interval based on samples taken at a rate you specify. This will result in up to four additional series per sensor that record the following information at each logging interval:

- The maximum, or highest, sampled value,
- The minimum, or lowest, sampled value,
- An average of all sampled values, and
- The standard deviation from the average for all sampled values.

For example, let's say the logging interval is set to 5 minutes and the sampling interval is set to 30 seconds (with maximum, minimum, average, and standard deviation all enabled). Once logging begins, the logger will measure and record the actual temperature sensor values every 5 minutes. In addition, the logger will take a temperature sample every 30 seconds and temporarily store it in memory. The logger will then calculate the maximum, minimum, average, and standard deviation using the samples gathered over the previous 5-minute period and log the resulting value(s). When reading out the logger, this would result in 5 data series: one temperature series (with data logged every 5 minutes) plus four maximum, minimum, average, and standard deviation series (with values calculated and logged every 5 minutes based on the 30-second sampling).

To set up statistics:

1. Select Statistics for Logging Mode in the Launch Logger window. If Statistics has already been configured for this logger, click the Edit button in the Launch Logger window.
2. Click the Maximum, Minimum, Average, and Standard Deviation checkboxes for each of the statistics you want to calculate during logging. Note that Average is automatically enabled when selecting Standard Deviation. In addition, the more statistics you record, the shorter the logger duration and the more memory is required.



3. Set the sampling interval, which must be less than and a factor of the logging interval. Choose either a preset sampling interval or select Custom and enter your own sampling interval. Keep in mind that the more frequent the sampling rate, the greater the impact on battery life.

- Click OK when done. This will return you to the Launch Logger window. Click the Edit button next to Logging Mode in the Launch Logger window to make additional changes.

Once logging begins, click the Alarm/Stats button on the logger to cycle through the current maximum, minimum, average, and standard deviation data on the LCD screen. You can plot the statistics series once you read out the logger.

### Reading Out the Logger

There are two options for reading out the logger: connect it to the computer with a USB cable and read out it with HOBOWare, or connect it to a HOBO U-Shuttle (U-DT-1, firmware version 1.18m030 or higher) and then offload the data files from the U-Shuttle to HOBOWare. Refer to the HOBOWare Help for more details.

### Recording Internal Logger Events

The logger records the following internal events to track logger operation and status. You can plot these events in HOBOWare after reading out the logger and opening the data file.

| Internal Event Name   | Definition  |
|-----------------------|---|
| Host Connected        | The logger was connected to the computer.   |
| Started               | The Start/Stop button was pressed to begin logging.   |
| Stopped               | The logger received a command to stop recording data (from HOBOWare or by pushing the Start/Stop button).                                   |
| Button Up/Button Down | The Start/Stop button was pressed for 1 second.   |
| Bad Battery           | The battery level dropped below 2.7 V (recorded even when the battery channel has been disabled).   |
| Good Battery          | The battery level rose to 2.9 V or above after a Bad Battery event was marked.  |
| Chan 1 Alarm Tripped  | A temperature alarm has tripped.  |
| Chan 1 Alarm Cleared  | A temperature alarm has cleared. This event also contains the value that was furthest out of range for the sensor before the alarm cleared. |
| New Interval          | The logger has entered or exited burst logging mode.  |
| Safe Shutdown         | The battery level dropped below 2.5 V; the logger performs a safe shutdown.   |

### Mounting the Logger

There are several ways to mount the logger using the materials included:

- Use the four built-in magnets on the back of the logger to mount it to a magnetic surface.
- Attach the Command strip to the back of the logger to mount it a wall or other flat surface.
- Use the double-sided tape to affix the logger to a surface.

- Insert the hook-and-loop strap through the mounting loops on both sides of the logger to mount it to a curved surface, such as a pipe or tubing.

### Protecting the Logger

The logger is designed for indoor use and can be permanently damaged by corrosion if it gets wet. Protect it from condensation. If the message FAIL CLK appears on the LCD screen, there was a failure with the internal logger clock possibly due to condensation. Remove the battery immediately and dry the circuit board. It is possible to dry the logger with a hair dryer, but do not let the board get too hot. You should be able to comfortably hold the board in your hand while drying it.

**Note: Static electricity may cause the logger to stop logging.**

The logger has been tested to 8 KV, but avoid electrostatic discharge by grounding yourself to protect the logger. For more information, search for “static discharge” in the FAQ section on onsetcomp.com.

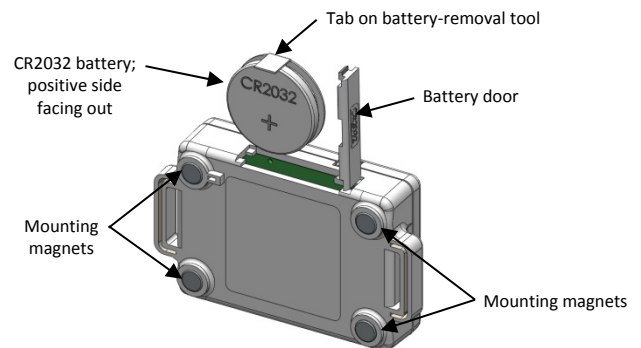
### Battery Information

The logger contains a 3V CR2032 battery (HRB-TEMP). Expected battery life varies based on the temperature where the logger is deployed, the logging interval, and other factors such as whether the logger is in burst logging or statistics mode. A new battery typically lasts 1 year with logging intervals greater than 1 minute. Deployments in extremely cold or hot temperatures, a logging interval faster than 1 minute, or a sampling interval faster than 15 seconds can impact battery life.

The logger can also be powered by the USB cable when the remaining battery voltage is too low for it to continue logging. Connect the logger to the computer, click the Readout button on the toolbar, and save the data as prompted. Replace the battery before launching the logger again.

To replace the battery:

- Open the battery door on the top of the logger.
- Use the tab on the built-in battery removal tool inside the compartment to remove the battery.



- Place the circular battery removal tool around the negative side of the new battery with the tab up. Insert the new battery with the positive side facing out. The LCD should display “HOBO” briefly after correctly installing the battery.

**⚠ WARNING:** Do not cut open, incinerate, heat above 85°C (185°F), or recharge the lithium battery. The battery may explode if the logger is exposed to extreme heat or conditions that could damage or destroy the battery case. Do not dispose of the logger or battery in fire. Do not expose the contents of the battery to water. Dispose of the battery according to local regulations for lithium batteries.

HOBOWare provides the option of recording the current battery voltage at each logging interval, which is disabled by default. Recording battery life at each logging interval takes up memory and therefore reduces logging duration. It is recommended you only record battery voltage for diagnostic purposes. Even with the channel disabled, a bad battery event will still be recorded.