

**Manual Hand Wheel
 Test Stand
 Model FGS-100H / FGS-50H**

Instruction Manual



Mounting Bracket

Force Gauges

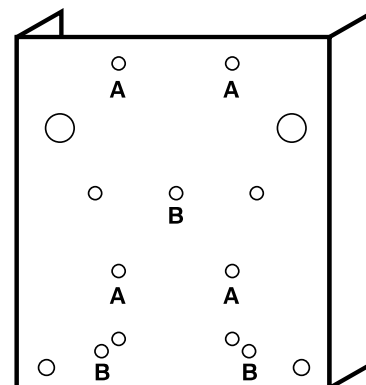
1. Remove the bracket from the test stand using the 5mm Allen wrench included.
2. Use the mounting holes marked “A” on the diagram for mounting the FGE and FGV series force gauges with the (4) M4x8 Philips head screws included.
3. Use the mounting holes marked “B” on the diagram for mounting the DFS series force gauges with the (3) M5x6 Philips head screws included.
4. Adjust the clearance span by removing the hex bolt from the hole in the back of the stand. Loosen but do not remove the hex bolts from the (3) slots. Adjust the span by sliding the drive unit to the hole position desired and insert the hex bolt and tighten. Tighten the (3) hex bolts in the slots as well.
5. Re-install the bracket with the force gauge to the test stand.
6. Testing may now begin with the force gauge and test stand.

Specifications

- Capacity:** 50Kg (110lbs.)
Travel: 150mm (5.9in.) MAX
Clearance: 50-202mm
 6 positions, 30mm/step (5 steps)
Weight: 15Kg (33lbs.)

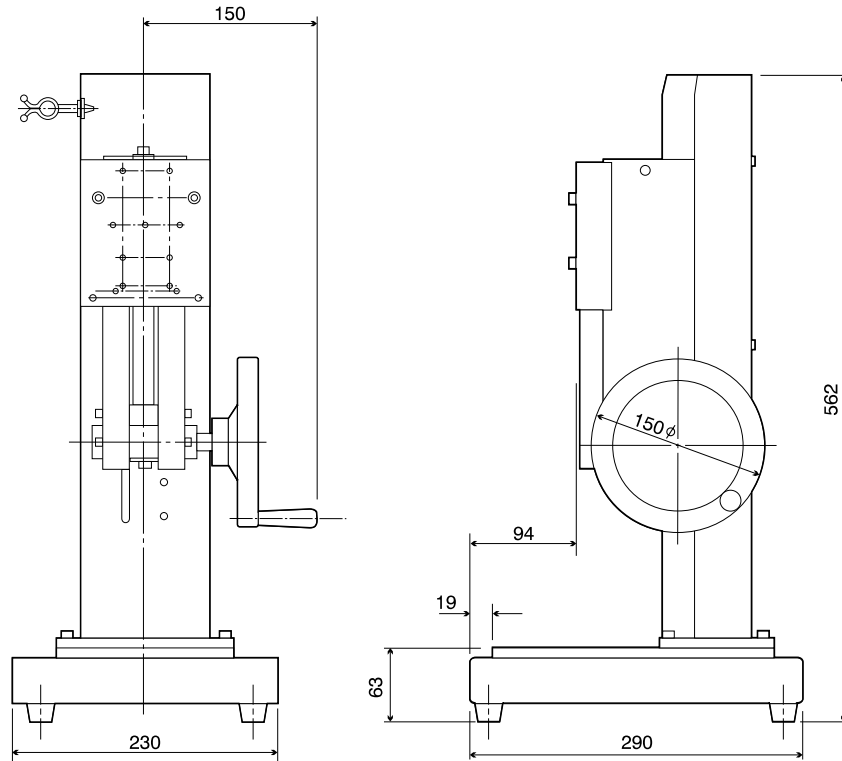
Accessories

- Mounting bracket 1pc.
 Cable holder 1pc.
 5mm Allen wrench 1pc.
 Philips head screw M4x8 4pcs.
 Philips head screw M5x6 3pcs.



Mounting Bracket

Dimensions



Dimensions in mm