

# Tape & Band TENSION SENSOR

## Model TERX

5 Tension Ranges  
0–100 g up to 0–2000 g

Dual-flanged, cylindrical rollers are ball bearing mounted to provide a friction-free path for tapes, bands and narrow webs/warps up to 30mm wide. TERX Tension Sensors are offered with roller widths of 7, 10, 15, 20 and 30mm.



## FEATURES

- Roller shells are available in aluminum, chrome-plated steel and plastic
- Precision strain gauge sensing for highest accuracy and repeatability
- 0–1 V DC output, proportional to tension (0–10 V DC optional)
- Frequency response of 100 Hz
- Surface mount electronics provide long-term reliability
- Optional 5 ft. cable, TE-CABLE-CC is recommended. Longer lengths are available.
- Specify roller width “YY”

## TENSION RANGES

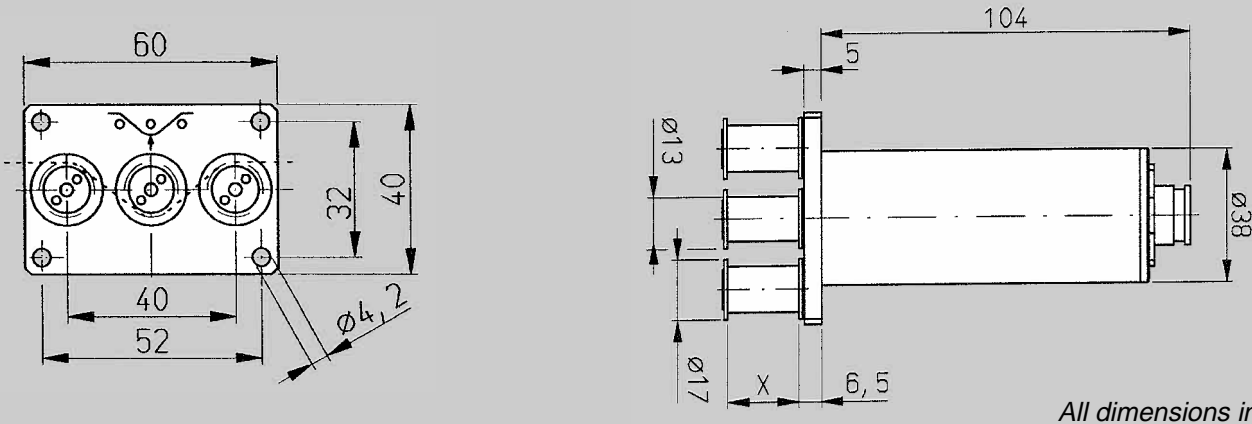
Model #	TERX-100-YY	TERX-200-YY	TERX-500-YY	TERX-1K-YY	TERX-2K-YY
Range	0–100 g	0–200 g	0–500 g	0–1000 g	0–2000 g

Note: “YY” designates the roller width (7, 10, 15, 20 or 30 mm). See roller dimensions on the reverse side.

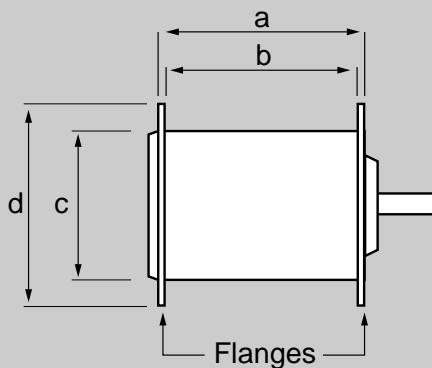
# MODEL TERX

# TECHNICAL DATA & SPECIFICATIONS

## Dimensions



## Roller



### Roller Dimensions

Roller Width	a	b	c	d
7 mm	9	7	13	17
10mm	12	10	13	17
15mm	17	15	13	17
20mm	22	20	13	17
30mm	32	30	13	17

### Note

Rollers are offered in single-flanged versions

*All dimensions in mm*

## Specifications

<b>Accuracy</b>	±1.5% FS or better	<b>Spacing of Outer Rollers</b>	40mm
<b>Sensor Excitation</b>	12–18 VDC, 21 mA	<b>Roller Diameter (Root)</b>	13mm
<b>Middle Roller Deflection</b>	0.5 mm (maximum)	<b>Roller Material</b>	
<b>Sensor Output</b>	0–1 VDC (standard), 0–10 VDC (optional), proportional to tension	<b>Standard</b>	Aluminum
<b>Overload Rating</b>	150% FS	<b>Optional</b>	Chrome-Plated Steel (ST) Plastic (PL)
<b>Housing Material</b>	Aluminum	<b>Maximum Linear Speed</b>	1000 m/min
		<b>With "K" option</b>	3000 m/min
		<b>Operating Temperature</b>	40 to 105 °F (5–40 °C)

*Specifications subject to change without notice.*

