

## VISUALL *i*

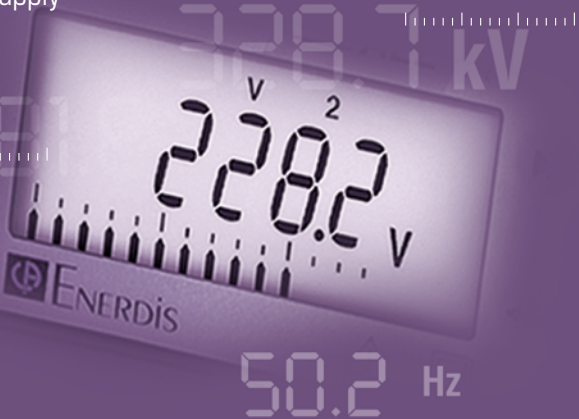
Panel mounting 96x96x51 mm  
Insulated current inputs to 1 A and 5 A  
Wide dynamic-range voltage inputs

## VISUALL

is the solution for measuring 3U (Ph-Ph), 3V (Ph-N), 3I, I neutral, F, P, maxima of 3I and P average, with a hour meter for every type of network.

## VISUALL *s*

4-module sized case for DIN rail mounting  
Current inputs to 1 A and 5 A  
Self supply



## TO ORDER

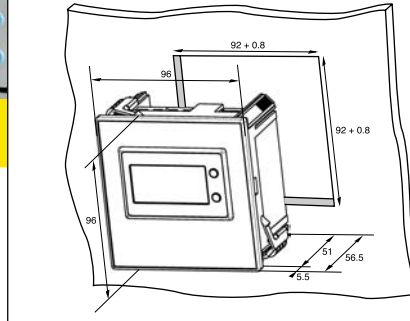
### VISUALL *i*

- Fixing by clips
- Weight: 340 g



• Reference  
PO1 331002

Dimensions en mm



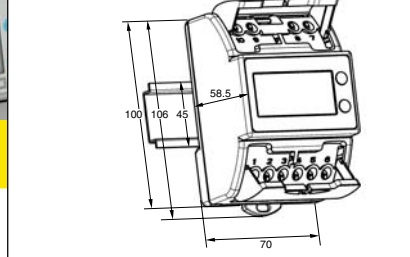
### VISUALL *s*

- Direct fastening to DIN rail
- Weight: 305 g



• Reference  
PO1 331001

Dimensions en mm



Your distributor

POWER MEASUREMENT & CONTROL DIVISION OF CHAUVIN ARNOUX

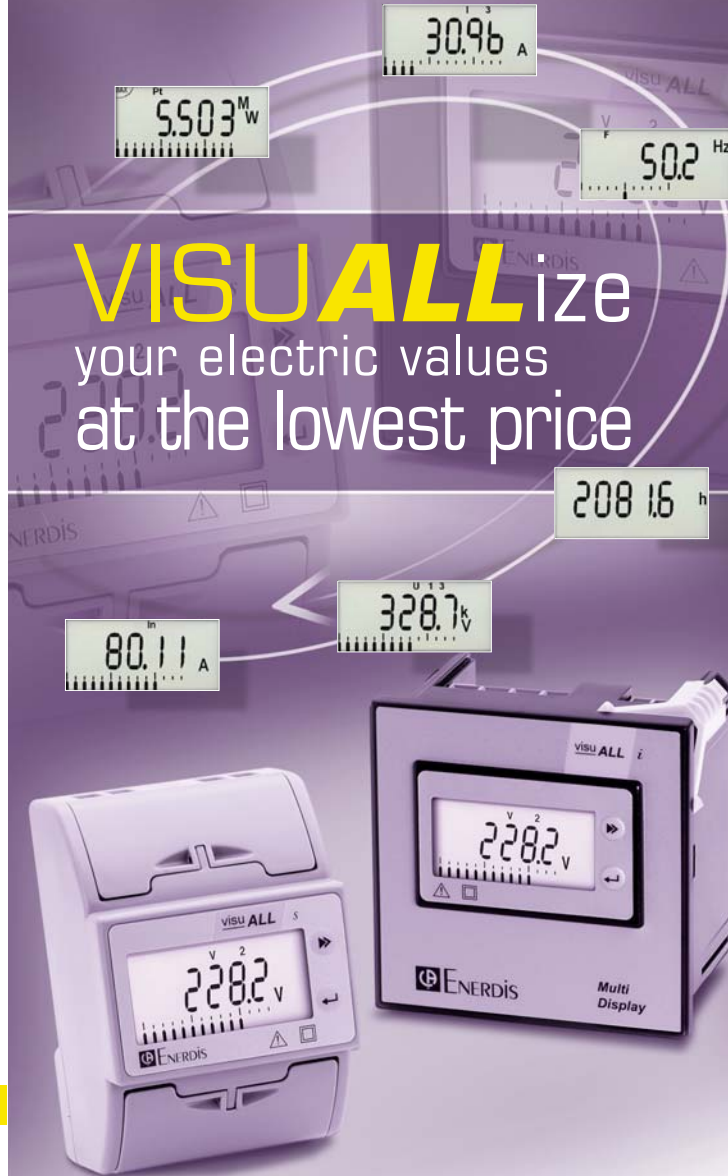
Enerdis

1-9, rue d'Arcueil - BP 675 - 92542 Montrouge Cedex  
Tel: +33 1 47 46 78 00 - Fax: +33 1 47 35 01 33  
e-mail: info@enerdis.com  
www.enerdis.com

ENERDIS

## MULTI-DISPLAY SOLUTION FOR ELECTRICAL NETWORKS

**VISUALLize**  
your electric values  
at the lowest price



906 211 060 - Ed 02 - 04/2003 - Non-contractual characteristics - komatko

ENERDIS

## TECHNICAL SPECIFICATIONS

## DISPLAY



### VISUALL i

#### ● Voltage measurement inputs

Measurement of V1, V2, V3, U12, U23, U31	
Range of measurement	from 20 to 576 Vac (Ph-Ph) max
Frequency	from 45 to 65 Hz
Burden	< 0.5 VA
Accuracy	± 0.5 %
Starting voltage	17.5 Vac (Ph-Ph)
Maximum overload	2 Vmax during 1s

#### ● Current measurement inputs

Measurement of I1, I2, I3, I neutral, I1 max, I2 max, I3 max	
Range of measurement	from 500 mA to 6 A max
Frequency	from 45 to 65 Hz
Burden	< 0.5 VA
Accuracy	± 0.5 %
Starting current	10 mA
Maximum Overcurrent	20 Imax during 0.5 s

#### ● Others measurements

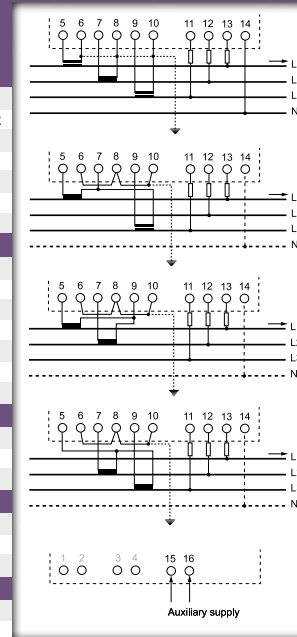
Active power accuracy	± (1 % P+0,1 % Sn)
Frequency accuracy	± 0.1 Hz (45-65 Hz)
Hour meter accuracy	250 ppm

#### ● Auxiliary supply

Alternative voltage	230/400 Vac ±20 %
Frequency	from 45 to 65 Hz
Burden	< 5 VA

#### ● Insulation voltage/mass

	5,55 kV (1 min)
	10,2 kV (1.2 μs / 50 μs)



VISUALL gets a high-readability STN screen with viewing angles of 120° vertically and horizontally. It enables the parameters of your electrical installation to be displayed by an automatic scrolling mode every 4 seconds. You can choose the values you want to be visualized in the scrolling mode among the 18 proposed screens.

### Examples of displays

#### MAXIMUM OF POWER DEMAND

VISUALL measures the maximum of power demand and the maxima of intensity demand on the 3 phases, **MAX** is also displayed. **RESET** indicates that the VISUALL is awaiting a possible reset instruction for the maximal displayed value.



#### PHASE TO PHASE VOLTAGE BETWEEN L1 AND L3

VISUALL displays every electrical parameter not only in a numerical value form but also in an animated bargraph form.

The numerical value of each measurement comes up directly in the appropriate unit (A, V, W and their multiples). Its bargraph displays from 0 to 130 % of the measurement. Higher than 130% the bargraph blinks. If the VISUALL is incorrectly connected, ✖ displays.

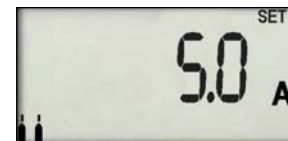


#### VISUALL CONFIGURATION

In the SET mode, you can program the following parameters:

- transformer primary and secondary currents,
- transformer primary and secondary voltages (only for VISUALL i),
- selection of the screens displayable for the automatic scrolling,
- integration time of maxima of power and currents demand.

The configuration is protected by a password.



### General specifications

#### ● Environmental conditions

Operating temperature	from -10 to +55 °C
Relative humidity	95%
Storage temperature	from -25 to +70 °C
Information storage	10 years at +25°C

#### ● Mechanical specifications

Material	polycarbonate
Protection class	IP51 front face
Maximum cable cross section	6 mm²
Terminal Fastening Torque	0,7 Nm ±10 % (6 mm²)

### VISUALL s

#### ● Voltage measurement inputs

Measurement of V1, V2, V3, U12, U23, U31	
Range of measurement	from 320 to 552 Vac (Ph-Ph)
Frequency	from 45 to 65 Hz
Burden	< 0.5 VA
Accuracy	± 0.5 %

#### ● Current measurement inputs

See current inputs specifications of VISUALL i	
Accuracy	± 0.5 % (± 2 % wiring 2 CT)

#### ● Others measurements

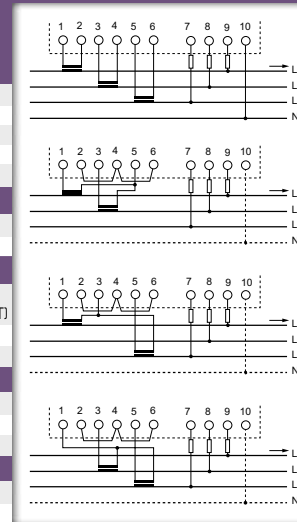
Active power accuracy	± (1 % P+0,1 % Sn)
	± (2 % P+0,2 % Sn wiring 2 CT)
Frequency accuracy	± 0.1 Hz (45-65 Hz)
Hour meter accuracy	250 ppm

#### ● Auxiliary supply

Self supply	between terminal 2 and 3
Frequency	from 45 to 65 Hz
Burden	< 5 VA

#### ● Insulation voltage/mass

	4 kV (1 ms)
	6,81 kV (1.2 μs / 50 μs)



## AVANTAGES

- Accuracy: 0.5 % for U and I, 1 % for P
- Automatic scrolling of screens
- Animated bargraph for every values
- High-readability display

2081.6 V



50.2 Hz

328.7 kV